

A composite image of space. The bottom left shows a curved horizon of Earth with blue oceans and white clouds. The right side is dominated by a large, detailed view of the Moon's surface, showing various craters and lunar maria. The background is a dark field of stars.

# YUKI Precision



SPACECRAFT  
MACHINING

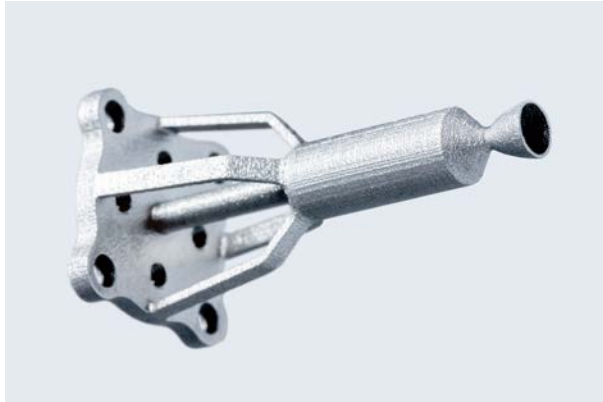
## **HISTORY**

Yuki Precision has over a half-century of experience in precision machining. With the integration of experience and innovation, we will solve any challenge for machine part production. We think of ourselves as a R&D machine shop, implementing a research and development approach for your production needs.

## **BUSINESS**

We offer expertise in complex and precise machining of stainless steels, titanium and other difficult-to-machine materials, providing precision components for various applications including the aerospace and medical industry.

# PRODUCT



## THRUSTER UNIT FOR MICROSATELLITE

Low toxic monopropellant thruster in a convenient safe compact package suitable for use in micro satellites. In development with research subsidized by NEDO.



## TITANIUM NOZZLE

RCS nozzle for use in experimental re-entry vehicle. Flow path and structure are 3D printed after which nozzle, valve connections, and locating elements were precision machined.



## CLUSTER NOZZLE

Scale model nozzle to test new propulsion designs at JAXA. Made from aluminum alloy, pressure sensing orifices are 0.3mm in diameter. Part of a series of propulsion test bench equipment.



## INCONEL MESH

Demonstration piece to show our capability to machine special alloys usually categorized as difficult to machine. Made by cutting a honeycomb structure from perpendicular axes.



## ROCKET INJECTOR

Liquid-propelled rocket injector demonstration piece. The injector piece is made from heat resistant nickel alloy. Orifices are small as 0.4mm diameter.



## R/C WHEEL

Machined for one-off R/C model car. Accurate reproduction of curves and features of the original design.

HQ Location	370 Enzo, Chigasaki, Kanagawa 253-0084 JAPAN
Overseas Office	24 Rue Salomon Reinach (Immeuble New Deal 2c) 69007 Lyon FRANCE
Year of Establishment	1961.7
Main Products	Prototype & mass production of parts related to Space and aviation industries
Main Client	Axelspace Corporation, Astroscale Pte. Ltd, Japan Aerospace Exploration Agency
Company Website	<a href="https://www.yukiseimitsu.co.jp/en/">https://www.yukiseimitsu.co.jp/en/</a>
Contact Form	<a href="https://www.yukiseimitsu.co.jp/en/inquiry/precision/">https://www.yukiseimitsu.co.jp/en/inquiry/precision/</a>
Point of Contact	info@yukiseimitsu.co.jp
Category	Component